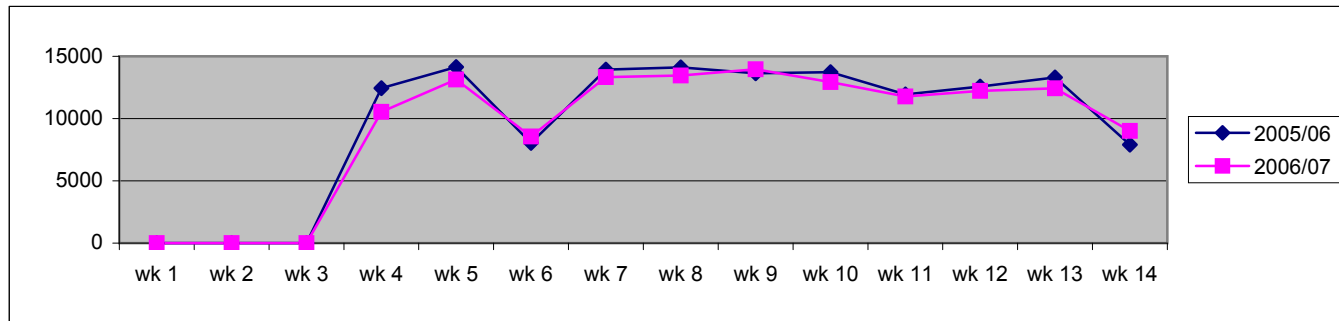


All Primary units excluding those previously cash cafeteria service

	wk 1	wk 2	wk 3	wk 4	wk 5	wk 6	wk 7	wk 8	wk 9	wk 10	wk 11	wk 12	wk 13	wk 14	Totals
2005/06	0	0	0	12,444	14,134	8,045	13,931	14,117	13,635	13,732	11,943	12,565	13,302	7,904	135,752
2006/07	0	0	0	10,535	13,135	8,555	13,326	13,460	13,953	12,933	11,769	12,228	12,431	9,015	131,340

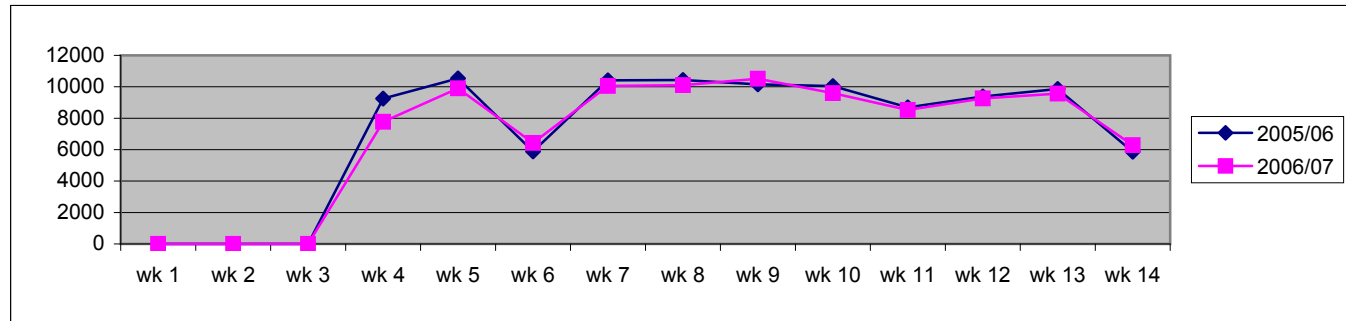
3.25%
decrease



Traditional units excluding those previously cash cafeteria service

	wk 1	wk 2	wk 3	wk 4	wk 5	wk 6	wk 7	wk 8	wk 9	wk 10	wk 11	wk 12	wk 13	wk 14	Totals
2005/06	0	0	0	9,252	10,530	5,889	10,408	10,428	10,160	10,049	8,691	9,386	9,857	5,870	100,520
2006/07	0	0	0	7,777	9,905	6,424	10,051	10,103	10,515	9,600	8,528	9,264	9,568	6,289	98,024

2.48%
decrease



DMS units

	wk 1	wk 2	wk 3	wk 4	wk 5	wk 6	wk 7	wk 8	wk 9	wk 10	wk 11	wk 12	wk 13	wk 14	Totals
2005/06	0	0	0	3,192	3,604	2,156	3,523	3,689	3,475	3,683	3,252	3,179	3,445	2,034	35,232
2006/07	0	0	0	2,758	3,230	2,131	3,275	3,357	3,438	3,333	3,241	2,964	2,863	2,726	33,316

5.44%
decrease

